



GAT MONTHLY MEMBERSHIP PROGRESS REPORT

Results as of: 5/31/2024

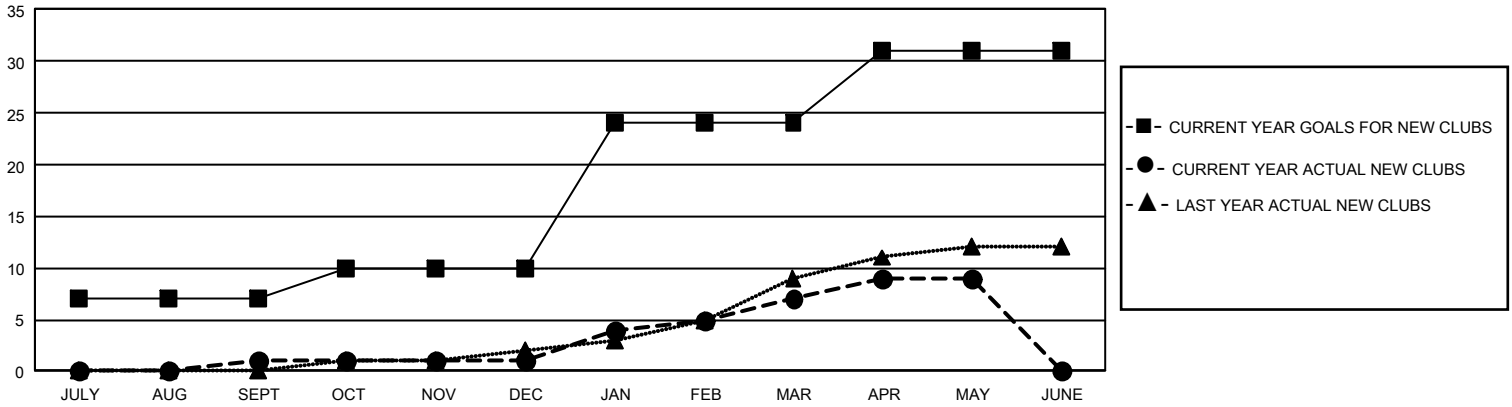
GMT Constitutional Area 5 - J, Group G

REPORT DOES NOT INCLUDE CLUBS IN UNDISTRICTED AREAS.

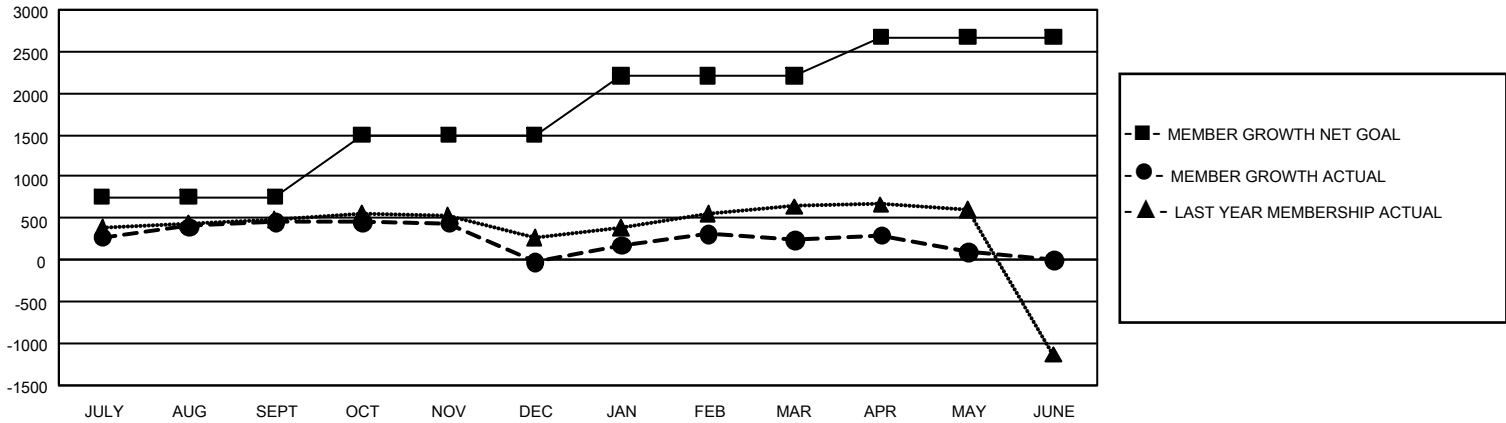
Clubs			
RESULTS FOR 2023-2024			
QUARTER	NEW CLUB GOAL	NEW CLUBS	DROPPED CLUBS
JULY/AUG/SEPT	21	1	0
OCT/NOV/DEC	9	0	4
JAN/FEB/MAR	42	6	2
APR/MAY/JUNE	21	2	0

Members			
RESULTS FOR 2023-2024			
QUARTER	MEMBER GROWTH NET GOAL	MEMBER GROWTH ACTUAL	DROPPED MEMBERS ACTUAL (including transfers)
JULY/AUG/SEPT	758	1,169	661
OCT/NOV/DEC	743	474	920
JAN/FEB/MAR	712	890	617
APR/MAY/JUNE	462	362	498

GOALS AND ACTUAL NEW CLUBS CUMULATIVE



GOALS AND ACTUAL MEMBERS CUMULATIVE



DROPPED CLUBS: 6	810 CLUBS OF 1,263 ADDED 1 OR MORE NEW MEMBERS	GENDER DISTRIBUTION	
		MALE 30,081 (76.83%) FEMALE 9,069 (23.16%) NON BINARY 0 (0.00%) PREFER NOT TO ANSWER 1 (0.00%)	
DROPPED MEMBERS		CLICK HERE FOR CUMULATIVE MEMBERSHIP DATA	TOTAL FAMILY UNIT MEMBERS 11,994
DECEASED 317 CLUB CANCELLED 0 OTHER 2,367 TOTAL 2,684	FAMILY MEMBERS PAYING HALF DUES 6,849		